



SBH A10-A20

Automatic Sanding Belt Holder For Lathes

1 GENERAL INFORMATION

The sanding belt holder SBH A is a tool used on conventional lathes to sand and deburr.

1.1 OBJECTIVES AND CONTENTS

The purpose of this document is not simply to provide instructions on the product but mainly to ensure that the operator work can be performed safely. This manual contains information on technical aspects, use and maintenance of the different spare parts of the device. This document is an integral part of the safety equipment and is essential for the proper use of the product. It must be always available for prompt consultation and should not in any case be duplicated, reproduced or transmitted electronically without prior permission of the manufacturer/distributor. In case of doubts regarding the interpretation of these instructions, refer to the manufacturer/distributor to obtain the necessary clarifications. All operations which require disassembly and assembly of parts must be performed by qualified personnel.

1.2 DESCRIPTION OF THE DEVICE

The device SBH A10 –SBH A20 is fixed to the toolpost and allows sanding operations of metal, aluminium and wooden bars without direct use of hands. Belt rotation takes place automatically exploiting the rotating motion of the workpiece shifted to the same belt that is suitably slowed by a hydraulic brake (patented system). It has been designed to fit the different diameters to sand. The abrasive belt can be replaced very easily (more details at chapter 4.1 – Replacement of the abrasive belt).

1.3 GUARANTEE AND RESPONSIBILITIES

Subject to the following, Tecno Più S.r.l. warrants parts, accessories and components of any new product against failures resulting from a defect in workmanship if used in a proper and normal use for a period of one year from date of delivery, with the exception of those parts subject to normal wear and the rotary damper which is guaranteed for a life time of 50.000 cycles under normal conditions, with a max. speed of 10 cycles per minute. The buyer is liable for installation and correct use in compliance with the manufacturer instructions. The only obligation of Tecno Più S.r.l., under such warranty, is limited to replacement of the product without additional charges on the part or component of the product. Any part of the defective product and/or any warranty claim is subject to inspection and evaluation by our quality check department who will confirm if product was used under normal use conditions. Warranty does not cover any modifications, improper use or installation on the device. Warranty does not cover normal wear maintenance components (for example the abrasive belt or the rotary damper with life time over 50.000 cycles). The above warranty is the only one expressly acknowledged and provided by the seller, of any kind. In any case, the seller's liability will never exceed the purchase price of the product. The seller, including if applicable his substitutes, will not be held liable to the buyer or third parties for any indirect, incidental, exemplary and / or economic damages.

1.4 RECIPIENTS AND CONSERVATION

The recipient of this manual is the workshop head, the machine operator as well as the technical personnel in charge of putting in operation the components on the machine who, in addition to being professionally trained in their task, must read the manuals paying particular attention to safety standards .

1/8

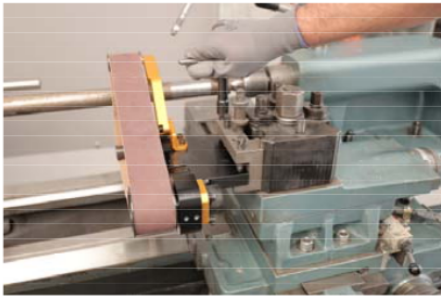
2/8

2. INSTALLATION OF THE DEVICE

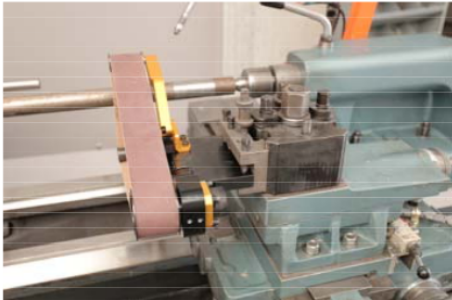
ATTENTION! The machine must be stopped during these operations.



Assembly on the lathe toolpost



Securely fasten



Correct position

3. CORRECT USE

3.1 SUPPLY STATUS AND ARRANGEMENT

Costs, such as any intervention to assemble the device on the machine, are at the expense of the Customer. The general packaging is made of a strong cardboard box containing the device, the protective carter, an abrasive belt and a rotary spare damper, all parts being well protected from each other with suitable materials

3.2 USE

From the initial position (see picture xx), start the lathe and carefully approach the device until the abrasive belt is placed in the working position (see picture x.x.). The belt will rotate at a speed directly proportional to the pressure made on the workpiece. In this way, the belt will always work optimally with a consumption of the same absolutely homogeneous .

ATTENTION: the device must work with a rotating speed of the pulley connected to the damper NOT exceeding 10 cycles/minute. This speed can be checked by detecting the sliding time of the belt between the two indicators in the slot of the protective carter and comparing it to the table placed aside of the slot.

ATTENTION: it is strictly forbidden by the manufacturer and by the standards in force to use any electrical appliance for rotating in a different way the abrasive belt.

3.2 INCORRECT USE

The device must be used only for the purpose stated in this manual. The use of the device does not exempt the operator to the use of personal protective equipment as provided in the risk assessment of the machine. Worn parts of the device must be properly checked and eventually replaced with original spare parts. The protective carter should NOT be removed when the device is working. Strictly observe the operations of good maintenance and cleaning of the device.

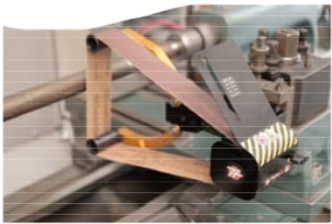
3/8

4/8

4. REPLACEMENT OF THE ABRASIVE BELT AND THE ROTARY DAMPER

ATTENTION! The machine must be stopped during these operations

4.1 REPLACEMENT OF THE ABRASIVE BELT



Remove carter



Remove strip



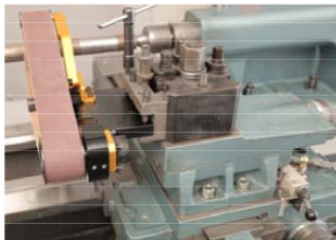
Lift the lower bar



Mount again strip

4.2 SOSTITUZIONE AMMORTIZZATORE ROTANTE

4.2 REPLACEMENT OF THE ROTARY DAMPER



Initial Position

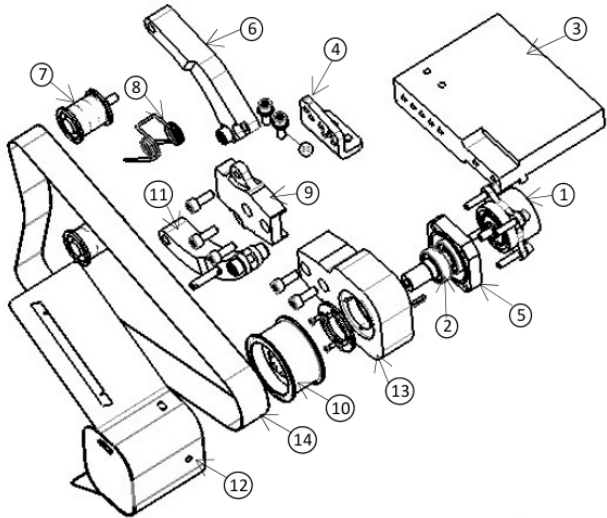


Remove the screws



Remove the damper

SPARE PARTS



5. MAINTENANCE

5.1 CLEANING

Every cleaning operation of the device must be carried out in switched off position and carried out by personnel suitably trained for ordinary maintenance operations. Cleaning of the different components can be done with common degreasers for industrial use. Do not absolutely use corrosive agents and solvents .

5.2 WASTE DISPOSAL AND PACKAGE DISPOSAL

Where it is decided not to use the safety device, subject of this manual, any longer because it is obsolete or irreparably faulty or worn out, put it out of order adopting and in conformity with the regulations in force for its disposal in the country of use. The device is composed by non-biodegradable parts and of substances which may pollute the environment, if not properly disposed. Parts of these materials can be recycled avoiding pollution of the environment. It is your and our duty to contribute to human health and to the environment.

6. SPARE PARTS AND SERVICE

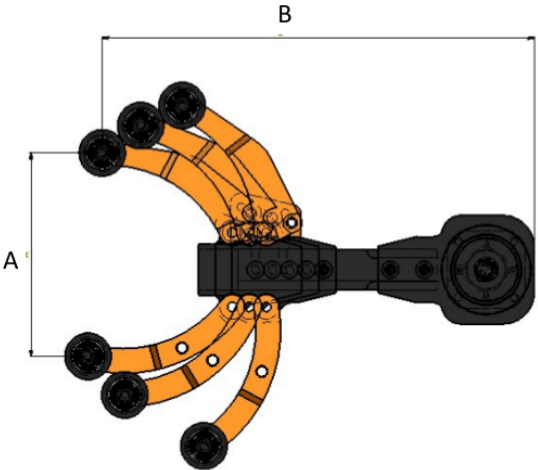
6.1 SERVICE

Consult your dealer or directly our Technical Service, providing the necessary data shown on the device packaging:

- Model
- Serial Number
- Date of purchase

In addition, provide all information concerning the problem found.

TECHNICAL DETAILS



SBH A10

Pos.	A	B	Belt
1	130	300	25x762
2	170	295	25x762
3	220	240	25x762

SBH A20

Pos.	A	B	Belt
1	210	325	50x915
2	230	315	50x915
3	270	305	50x915

7. REMARKS ON THE USE OF THE MANUAL

Review Remarks

REV02	14/11/2017 Issue of technical documentation series SBH A10-A20
-------	--